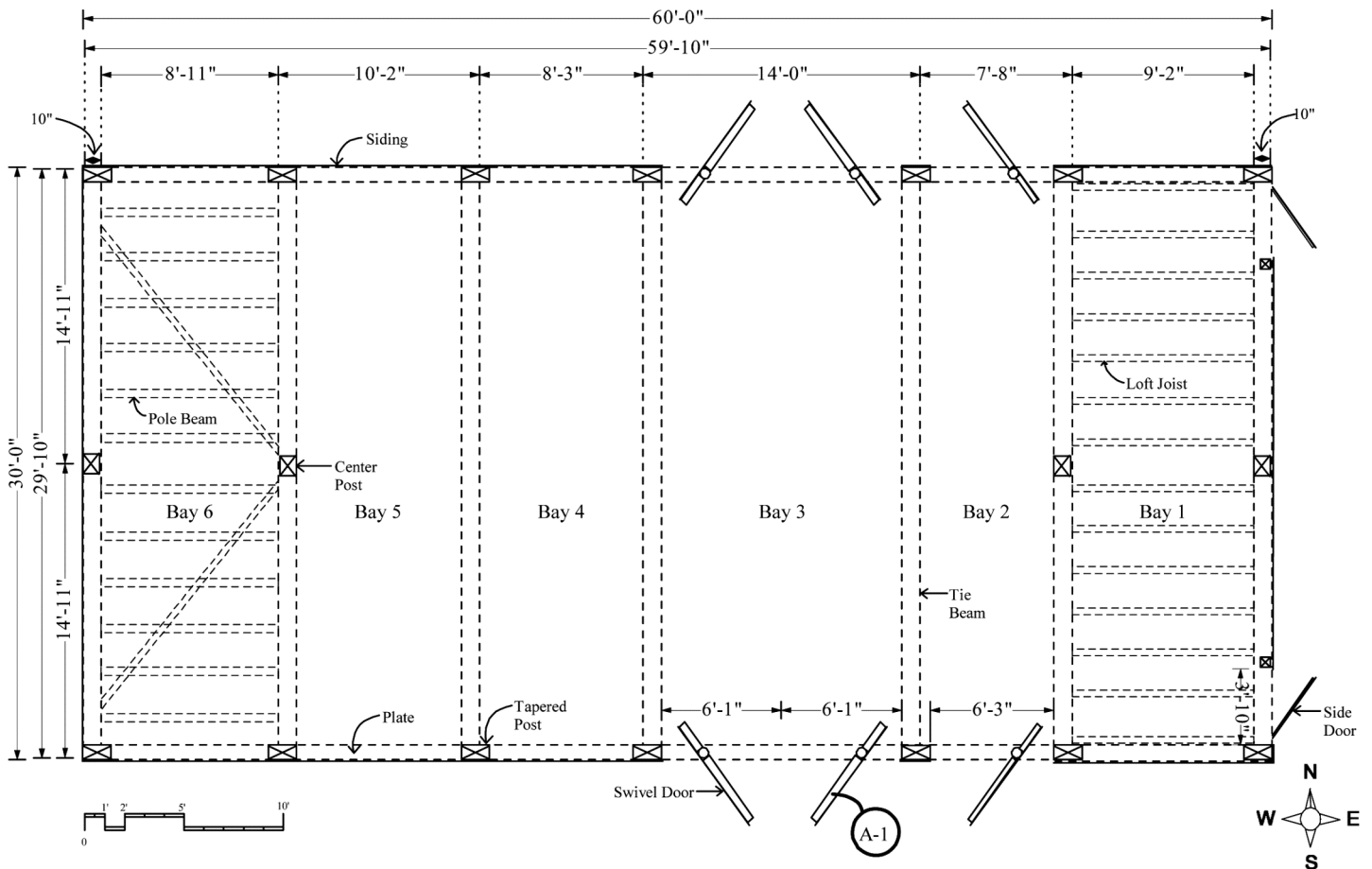




HISTORIC BARNS OF NIPMOOSE

SCOTTISH BARN STRUCTURAL DRAWING: FLOOR PLAN



BEAM DIMENSIONS: WIDTH AND DEPTH

Center Post: 9 in. x 11 in. at top of post
 Loft Joist: 4 in. wide x 8 in. deep
 Plate: 8 in. wide x 8 in. deep
 Pole Beam: 5 in. round

Siding: One inch thick
 Tapered Post: 9 in. - 11 in. x 15 in. - 19 in. at top of post
 Tie Beam: 10 in. wide x 13 in. deep